



# Durban Port Infrastructure for Cruise Tourism

**13<sup>th</sup> African Renaissance Festival  
Conference  
5 August 2011**

**By Ricky Bhikraj**



# Outline

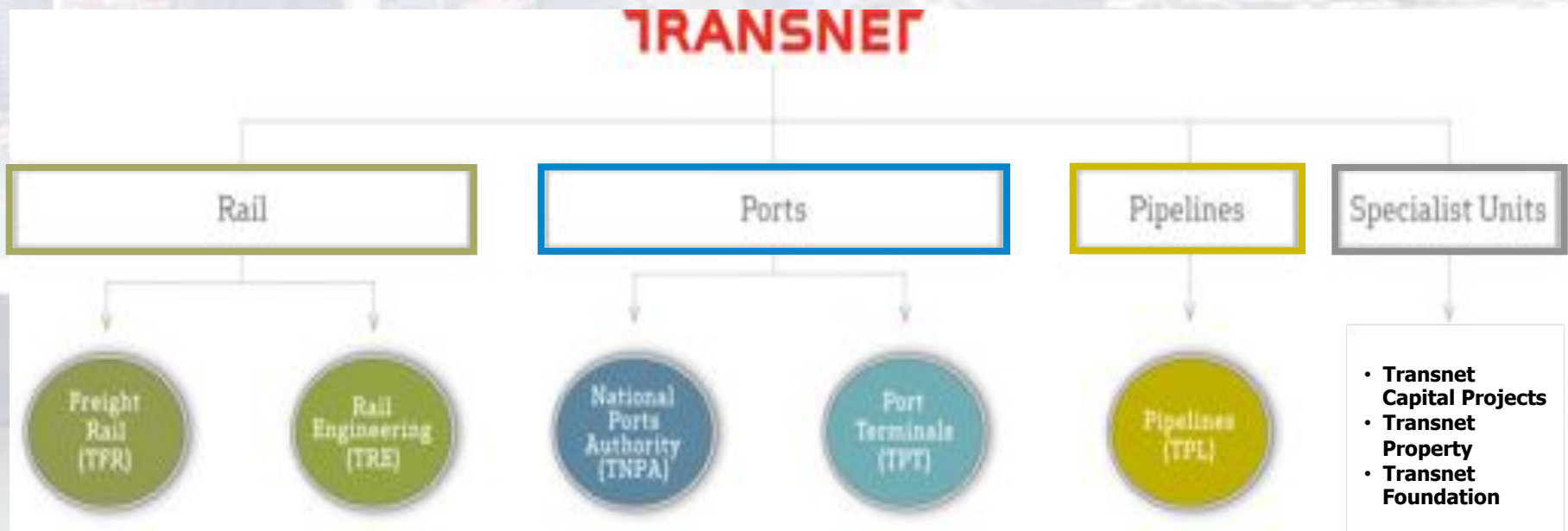
- Transnet and the Ports system
- Historical background
- Market trends
- N Shed Passenger Terminal
- New cruise terminal

# Transnet and the Ports system



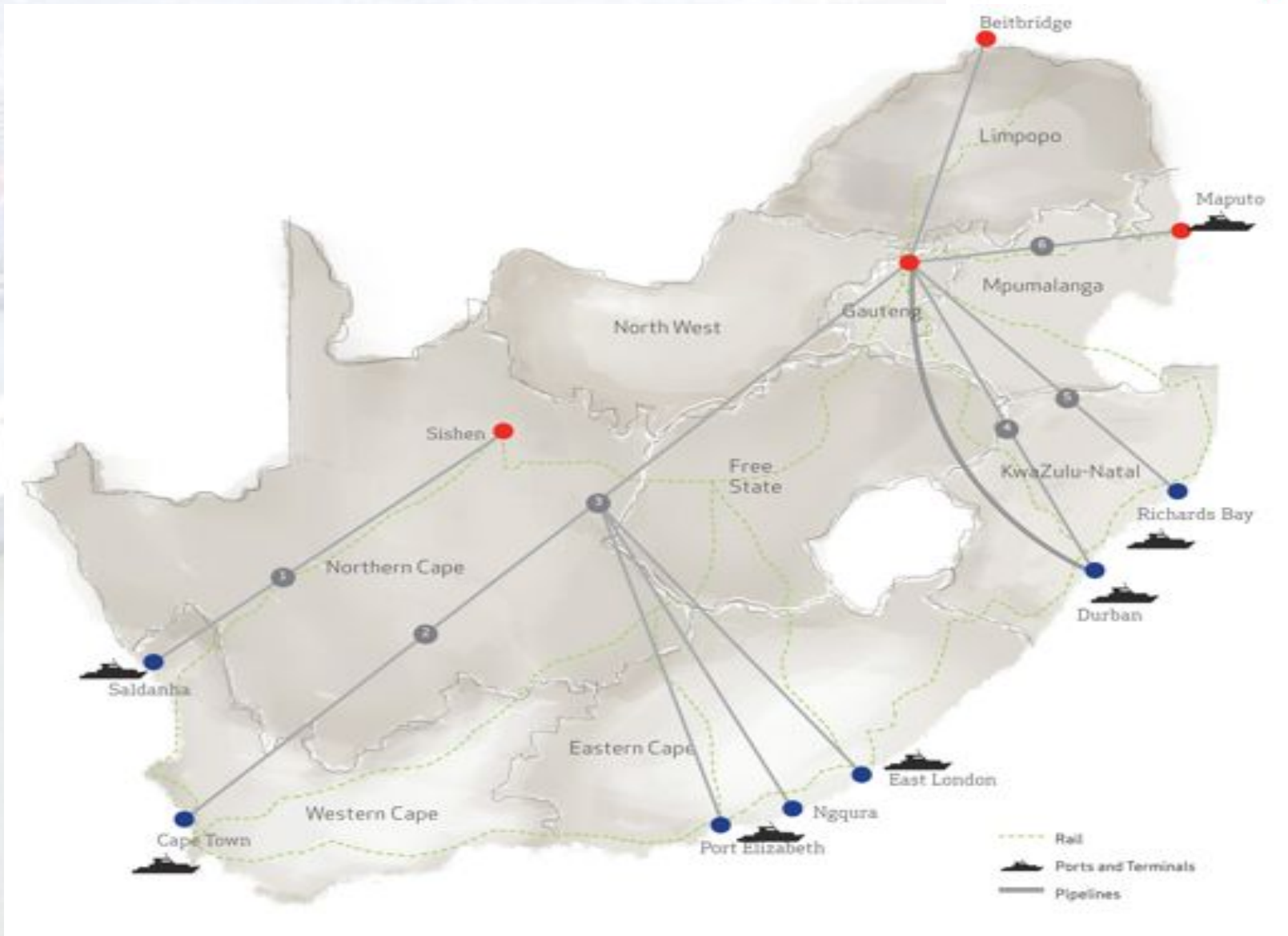
delivering on our commitment to you

*national ports  
authority*





# Transnet and the Ports system





# Historical background

- Vessels carrying passengers to Durban:
  - England from 1849 (Byrne Settlers)
  - India from 1860 (Indentured Labourers)
- Prominent Lines frequented Durban until the late 1900's.
  - Union-Castle, Clan Line, Holland Africa Line, Deutsche Afrika Line, Ellerman & Bucknall, Shaw Savill, and Moore-McCormack Lines
- "Flying Boats" (sea planes) also frequented the harbour
- Ocean Terminal Passenger Facility operated 1962 - mid 1970's
- N Shed Passenger Terminal current passenger facility

# Historical background

TRANSNET



delivering on our commitment to you

national ports  
authority



Empress of Britain, showing a bit of Durban

# Historical background



Castle passenger liner leaving port 1950

# Historical background



The Short C Flying Boat named CAMBRIA (they all carried names) at Durban's Salisbury Island, circa late 1930s.



# Historical background



Flying Boat base @ Bayhead 1948

# Market trends

Includes Port of Durban, Toamasina (Madagascar), Port Louis (Mauritius) and Le Port (Reunion)  
 (Figures for Seychelles not included)

Cruise Line Operators	Capacity (No. of beds)	No. of vessels
Costa	1700	1
Cunard	3090	1
P & O	1260	1
Princess	2776	2
Seabourn	450	1
Crystal	1070	1
Hapag-Lloyd	768	3
MSC	3579	2
Oceania	684	1
Regent	700	1
Silversea	296	1
Spirit of Adventure	248	1
Travel Dynamics International	114	1
<b>Total</b>	<b>16 735</b>	<b>17</b>



# Market trends

Figures for Durban

<b>Year</b>	<b>Total no of vessel calls</b>	<b>Passengers</b>
2004/2005	45	42 576
2005/2006	64	62 262
2006/2007	53	84 600
2007/2008	43	75 938
2008/2009	82	123 380
2009/2010	58	163 331
2010/2011	67	157 424

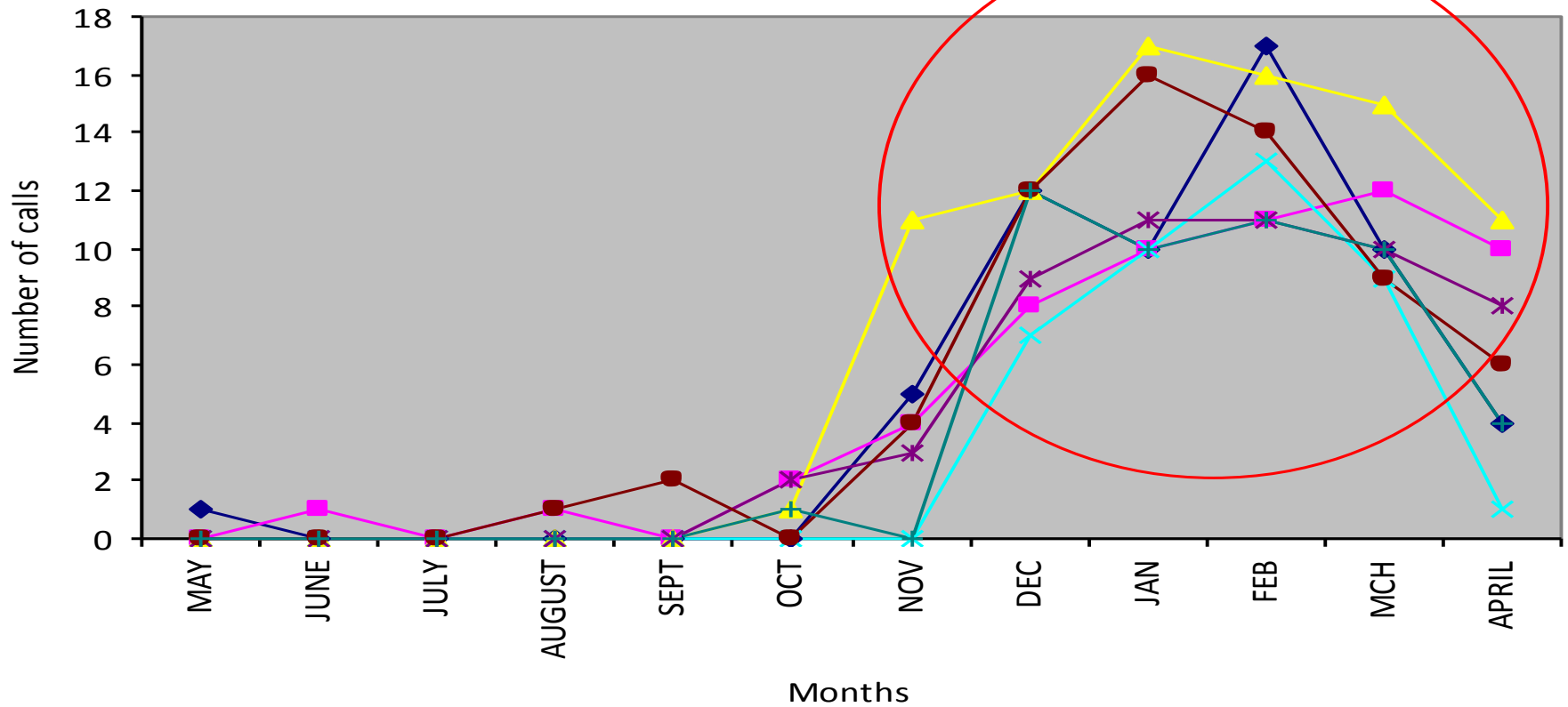
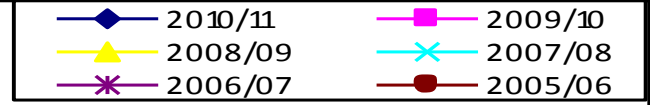


delivering on our commitment to you

national ports authority

# Market trends

Cruise Liner arrivals indicating Cruise Season - Port of Durban





# N Shed Passenger Terminal

- “N Shed Passenger Terminal” services current market
  - Refurbished cargo shed
  - Investment of R10m to meet short term demand
  - Constraints:
    - Located within cargo working area
    - Limited capacity (area of 3000sqm)
    - Quay length 250m
    - Inadequate backup and logistical support space

# N Shed Passenger Terminal

TRANSNET



delivering on our commitment to you

national ports  
authority

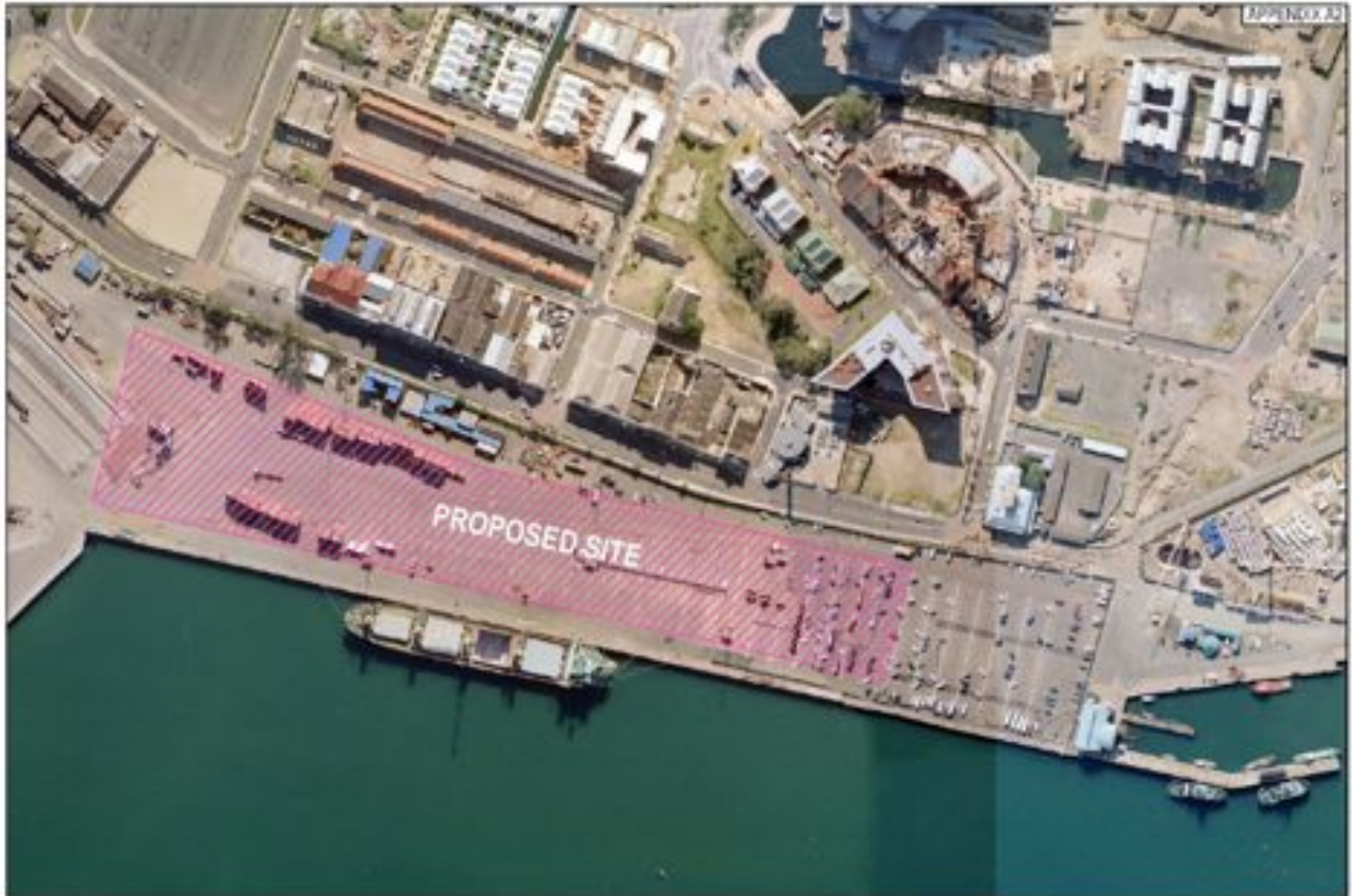




# New cruise terminal



# New cruise terminal...





# New cruise terminal...





# New cruise terminal...

- Planned at A and B berth at Point (35 000sqm available)
- Considerations and requirements
  - ✓ Complementary to medium rise mixed use developments
  - ✓ 700m quay length, 10.5m berth depth
  - ✓ Integration with transport system (local and international)
  - ✓ Multi functional facility to mitigate seasonality
  - ✓ Modern design principles (greening)
  - ✓ Gangways and air bridges



# New cruise terminal...

- Considerations and requirements...
  - ✓ Equitable access
  - ✓ Holistic concept integrates with the City, tourism market and
  - ✓ A multi functional facility to mitigate seasonality
  - ✓ Viewing deck
  - ✓ Grow the local economy and local cultural brands
  - ✓ Create a positive experience for the tourist
  - ✓ Address logistical aspects of parking, transfers, traffic flows, baggage
  - ✓ Integrated security and law enforcement

# New cruise terminal...



## Example of air bridge



# Examples of cruise terminals



delivering on our commitment to you

national ports  
authority

## Singapore Cruise Terminal



Source: Luis de Carvalho Consult - DC



delivering on our commitment to you

national ports  
authority

# Examples of cruise terminals

## St Petersburg Cruise Terminal



Source: Luis de Carvalho Consult - DC

# Examples of cruise terminals



## Port Everglades - Florida



Source: Luis de Carvalho Consult - DC

# Examples of cruise terminals



delivering on our commitment to you

national ports  
authority

## Falmouth - Jamaica







# New cruise terminal...

- Development phases:
  - ✓ Pre-feasibility by end September 2011
    - High level design and developmental model
  - ✓ Feasibility by May 2013
    - Detailed design, EIA and tender awards
  - ✓ Construction completion by end June 2015
  - ✓ Commissioning by end July 2015



delivering on our commitment to you

*national ports  
authority*

**THANK YOU**